

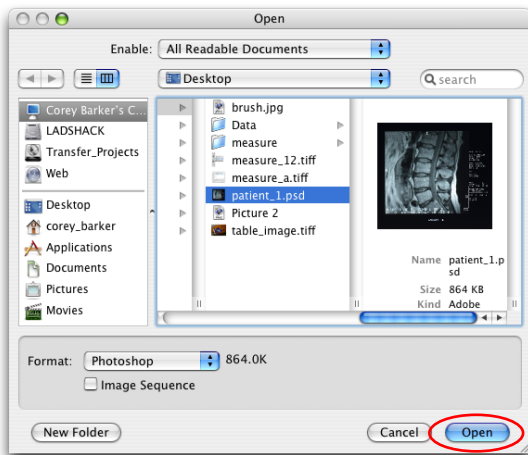
Calibrate, Record, Export Measurements

BY COREY BARKER



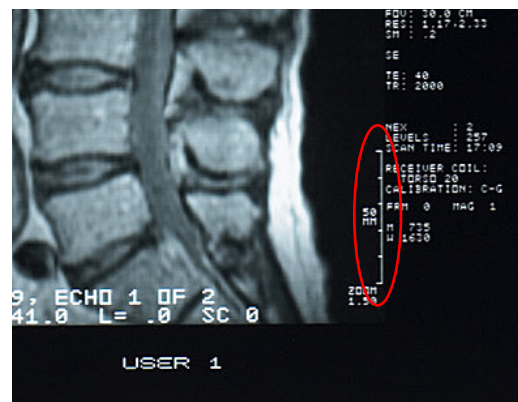
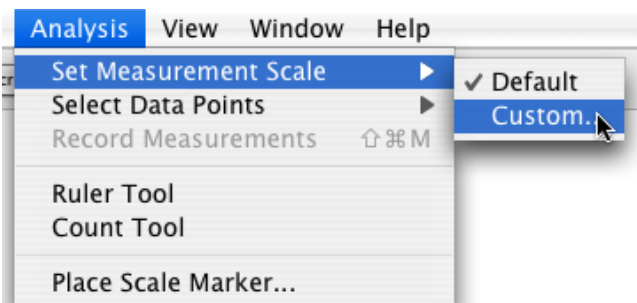
The measurement feature is one of the more involved tools inside Photoshop CS3 Extended. However that doesn't mean it's difficult to learn. Here we will calibrate a measurement scale, set and record measurements, and then export them to be analyzed in another program like Excel.

STEP ONE: Start by opening an image to measure. Go to the File menu and choose Open. Navigate the finder window to locate the file you wish to measure. Then click the Open button.

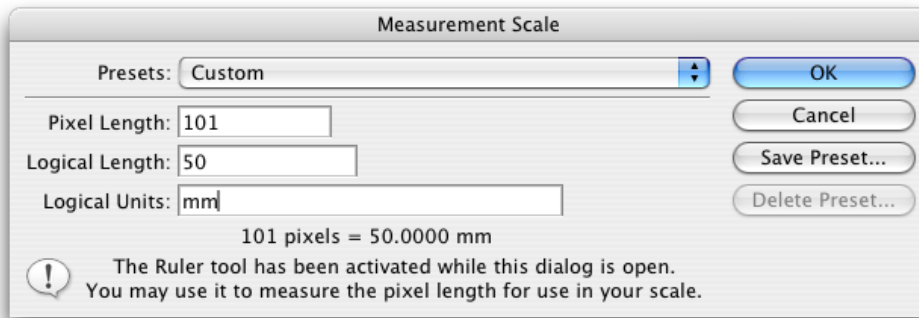


STEP TWO: Next we need to calibrate a measurement scale that all the measurements will be based on. In this scan I see that a scale and unit of measure is indicated in the scan.

To set the scale in the file. Go to the Analysis menu and choose Set Measurement Scale and select Custom.



STEP THREE: Immediately the Measurement Scale window opens. At the bottom it indicates that the Ruler tool has been activated while this dialog is open. This means we can manually measure from one point to another inside the actual document.



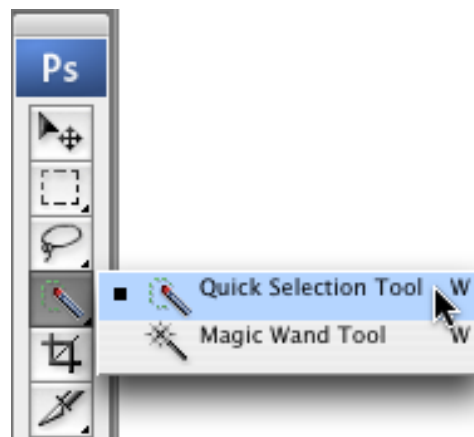
Inside the image, go to the scale marker and click either the top or bottom of the scale and drag to the other end. The pixel measurement will appear in the Pixel Length field. As you can see, it indicates a pixel length of 101.

We can tell from our scan that the scale marker indicates a length of 50mm. So enter 50 for the Logical Length and mm for the Logical Units. The result will be indicated as 101 pixels = 50.0000mm. Now all measurement made will be based on this measurement.

Now you do have the option of saving this scale as a preset. This can be very handy if you are processing numerous scans with similar specs. Just click the Save Preset under the Cancel button. When prompted give the preset a name (Tip: It's a good idea to name the preset as the unit of measure. Example: *scan_101px = 50mm*) This makes it easier to distinguish if you have a long list of presets.



STEP FOUR: With the Measurement Scale established, select the Quick Selection tool in the tool bar.

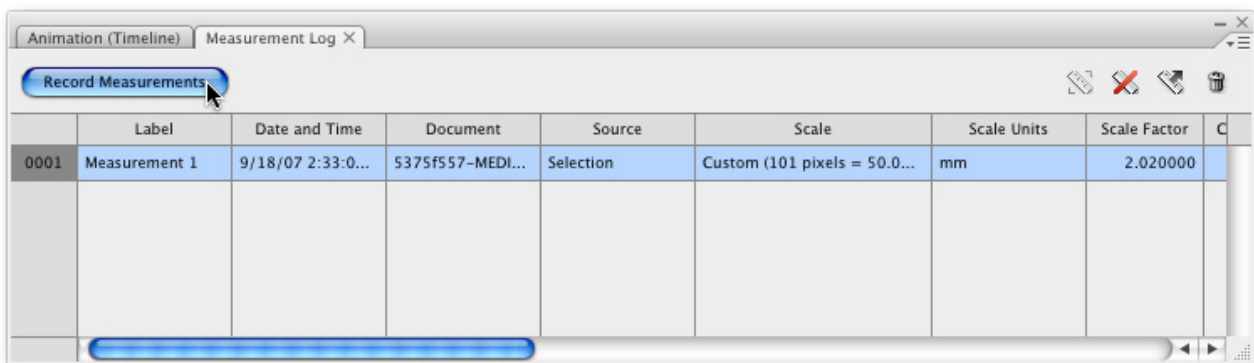


STEP FIVE: The Quick Selection tool is very good at generating tonal areas even those that have relatively low contrast. Simply click and paint in an area that you want selected. It will create the selection based on the color and texture of the area you are painting.



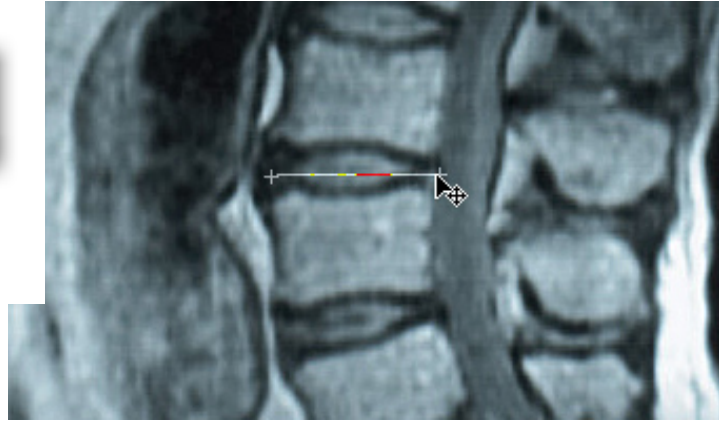
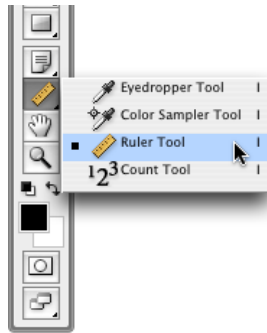
STEP SIX: Once you have a selection of the target area. Go under the Window menu and choose Measurement Log. This is where all your measurement information will reside. To calculate the measurement of the selected area just click the Record Measurements button in the upper right corner. You can see in this example that it labels the item, stamps a date and time, shows the file name, and the source of the measurement which in this case was a selection. The rest of the information is relevant to the actual measure that was taken: width, height, area, etc. Scrolling along the window from left to right will reveal all the properties that have been recorded.

So let's generate a measurement using a different tool.



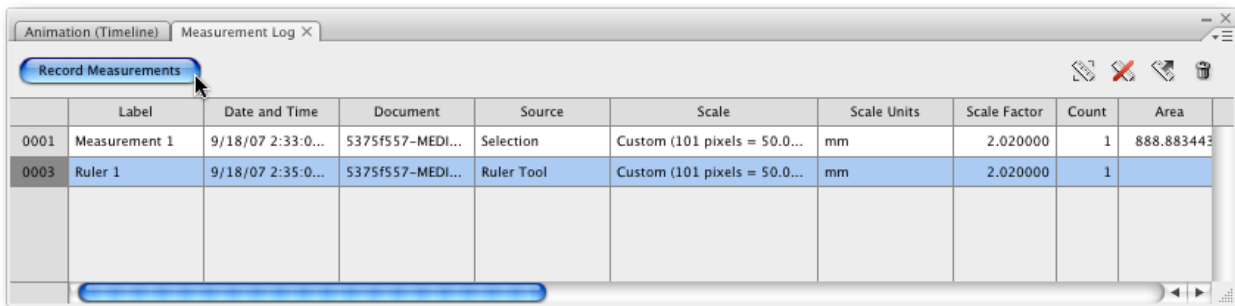
STEP SEVEN: In the toolbar, select the Ruler tool. Then to measure, simply click and drag the ruler from a start point across to an endpoint. A measurement path will remain after you click a second time.

Now if you didn't get either point in exactly the right spot you can click the cross hair point and reposition.

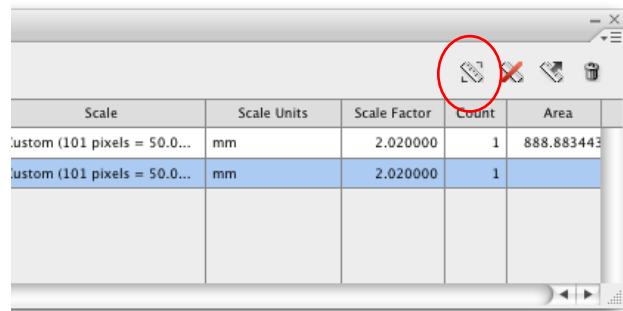


STEP EIGHT: As we did before, click the Record Measurement button. This will create a second item in the Log. The Label will reflect the tool that was used to create the measurement. All other information is recorded and still reflects the established measurement scale.

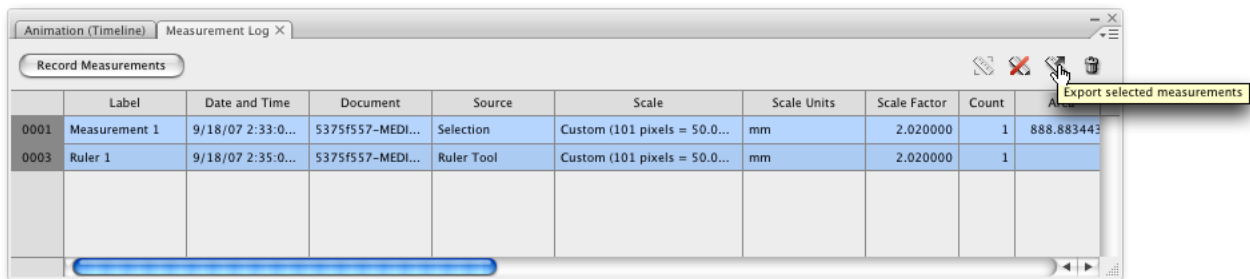
So now that we have this data, let's get it out of Photoshop. In the next step we will cover exporting the data.



STEP NINE: To export multiple strings of data click the Select All Measurements icon on the Measurement Log to highlight all the measurement data.



STEP TEN: Then click the third icon which is the Export Selected Measurement.



STEP ELEVEN: The measurements will be exported as a text file. Simply give the file a name and choose a destination. I recommend creating a new folder when you do this because not only will Photoshop save the text file, but it will also create a another folder with other supporting data contained inside.

Finally you can import this text data file into a program like Excel to analyze further.

