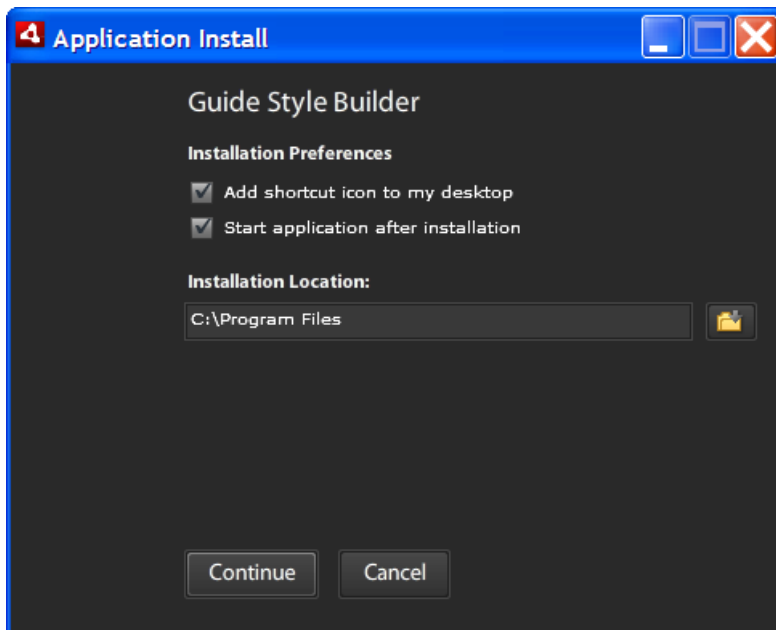


Guide Style Builder 1.0

The Guide Style Builder is an Adobe® AIR application that enables you to customize the appearance, fonts, colors, logos, etc. of Guides. This application used to be integrated with Adobe® LiveCycle® Designer ES. Guides are now integrated with Adobe® LiveCycle® Workbench ES2, and the Guide Style Builder is provided as a standalone tool.

1.0 Installation

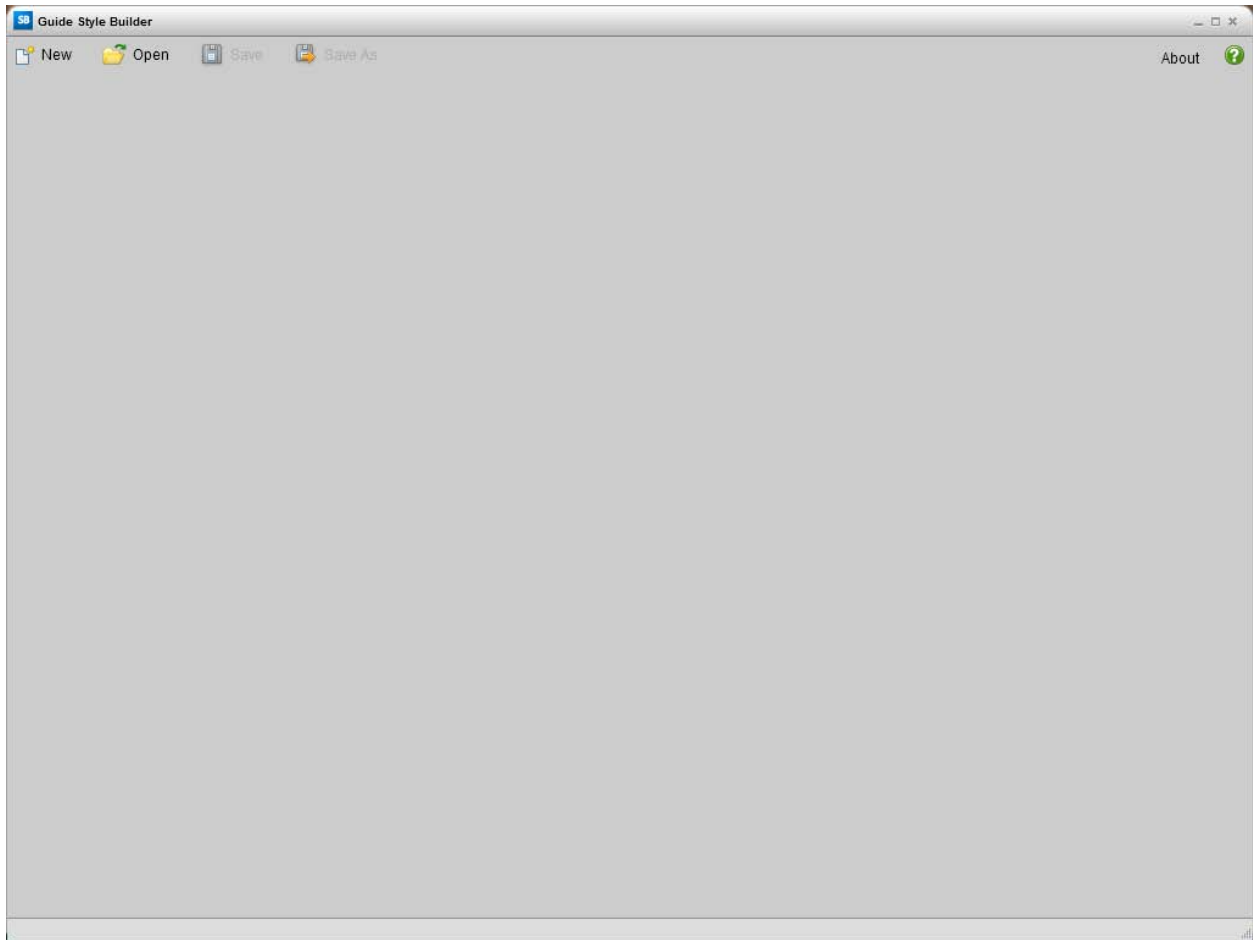
1. Download the application and run the GuideStyleBuilder.air file.
2. Click the Install button and the following screen appears.



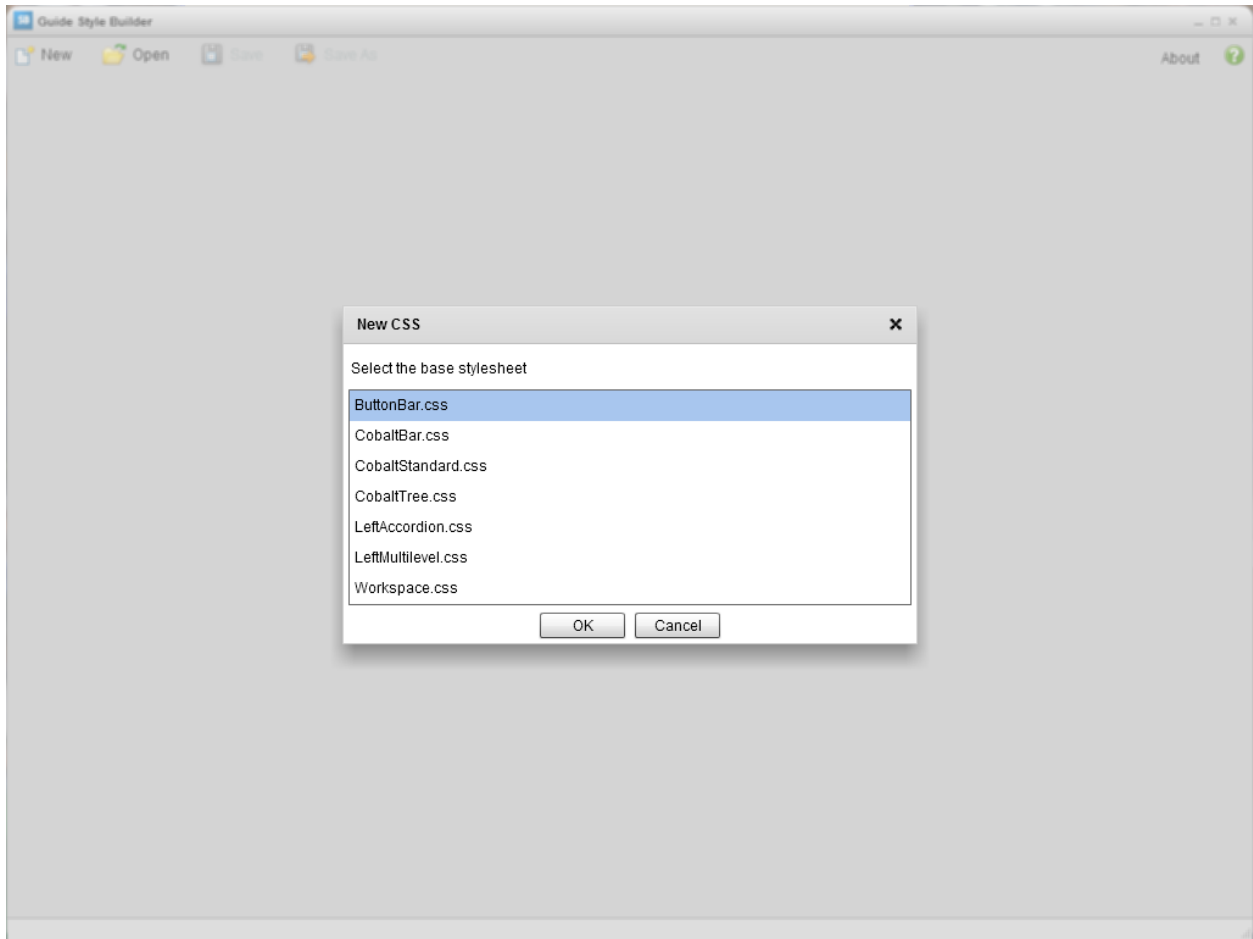
3. Select the folder where the Guide Style Builder should be installed. The application is installed in the GuideStyleBuilder folder under the selected installation location.

2.0 Introduction to the Guide Style Builder

When you open the application, the following screen appears.



You can create a new CSS file or open an existing file. Selecting the New command displays the following dialog which enables you to select a base style sheet. To obtain the best results, select the base style sheet that matches the Guide layout you selected on the Guide Design perspective in Workbench.

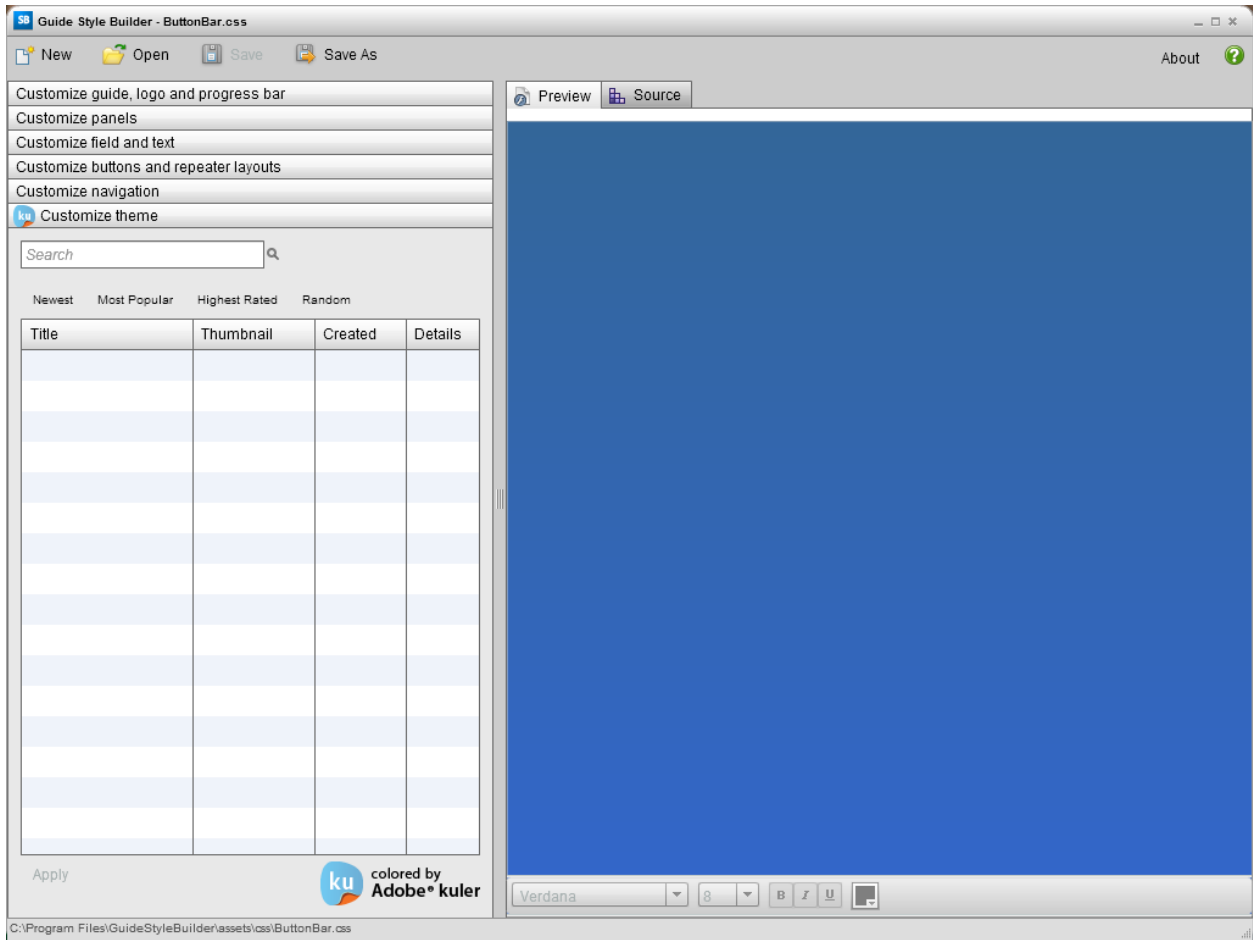


The base CSS files displayed in the dialog can also be found in the subfolder “LiveCycle_ES_SDK\misc\Guides\css” in the Workbench installation location.

Once you have created a new style sheet or opened an existing one, the operations of the Guide Style Builder are the same as form guides in Designer ES, except for one addition, which is the Customize Theme feature. For information on the use of the Guide Style Builder, refer to the “Customizing the appearance” topic of the [Using Guide Builder](#) documentation.

3.0 Customize Theme

When you select Customize Theme, the following screen appears:



To see a list of color themes, type the term to search for in the Search field, and then press Enter or click the Search icon. You can also click the Newest, Most Popular, Highest Rated or Random buttons. The list includes the color themes that you can use for the Guide color scheme. To select a theme and preview the colors, double-click an entry in the list or click the Apply button. Each time you click the Apply button or double-click the same list entry, the color combination is randomized and displayed in the preview, giving you different results to select from.

4.0 Importing the Result in Workbench

The Guide Style Builder saves a CSS file. You need to compile the CSS file to a SWF file before you can use the style sheet with a Guide. To compile the CSS file, locate the mxmhc.exe application on your computer and install the Flex 3.4.1 SDK. It is normally located in the following folder: C:\Program Files\Adobe\Flex Builder 3\sdk\3.4.1\bin\mxmhc.exe. For information on installing and configuring your development environment, refer to page 20 of the [Customizing the LiveCycleWorkspace ES2 User Interface](#) document.

1. To compile the CSS file to a SWF file, open a command window.

2. From the above referenced folder, type:

mxmhc [yourfilename].CSS

3. Import the SWF file into Workbench ES2.

Section 3 of the [Customizing Guides Using Flex® Builder™](#) document provides further information on compiling CSS files and importing the SWF file into Workbench.

After importing the SWF file into your application, associate it with the Guide you are designing in the Guide Design perspective in Workbench.

1. In the Guide Tree view, select the Guide, which is the top-level node.
2. In the Guide Properties view, deselect the Use Default Stylesheet option.
3. Click the Browse icon beside the Guide Style option.
4. Select the style sheet you imported from the Applications view.
5. To see the result, preview the Guide.