

ADOBE® LIGHTROOM

DEPLOYING ADOBE® LIGHTROOM® 4 IN THE ENTERPRISE

ENTERPRISE DEPLOYMENT GUIDE



© 2012 Adobe Systems Incorporated and its licensors. All rights reserved.

Adobe® Lightroom 4 —Deploying Adobe® Lightroom® 4 in the Enterprise

This guide is licensed for use under the terms of the Creative Commons Attribution Non-Commercial 3.0 License. This License allows users to copy, distribute, and transmit the guide for noncommercial purposes only so long as (1) proper attribution to Adobe is given as the owner of the guide; and (2) any reuse or distribution of the guide contains a notice that use of the guide is governed by these terms. The best way to provide notice is to include the following link. To view a copy of this license, visit <http://creativecommons.org/licenses/by-nc-sa/3.0/>

Adobe, the Adobe logo, Acrobat, Adobe Audition, Adobe Bridge, Adobe Device Central, Adobe OnLocation, Adobe Premiere, Adobe Premiere Pro, Adobe Technical Communication Suite, After Effects, Contribute, Captivate, Creative Suite, CS Live, Dreamweaver, Encore, Fireworks, Flash, Flash Builder, Flash Catalyst, FrameMaker, Illustrator, InDesign, Photoshop, RoboHelp, SiteCatalyst, and Soundbooth are either registered trademarks or trademarks of Adobe Systems Incorporated in the United States and/or other countries. Apple, Mac, and Mac OS are trademarks of Apple Inc., registered in the United States and other countries. Microsoft, Windows, and Windows Vista are either registered trademarks or trademarks of Microsoft Corporation in the United States and/or other countries. UNIX is a registered trademark of The Open Group in the US and other countries. All other trademarks are the property of their respective owners.

Adobe Systems Incorporated, 345 Park Avenue, San Jose, California 95110, USA.

Deploying Adobe Lightroom 4 in the Enterprise

Adobe® Lightroom is now available as part of the Creative Cloud Team Ready® and Adobe Creative Cloud for Enterprise offerings. Adobe Lightroom can be packaged using Adobe Application Manager Enterprise Edition (AAMEE).

This document guides you through the steps to build the Lightroom package. After this you can use your chosen deployment tool, such as Jamf Casper, Alteris or Microsoft's SCCM.

The document covers the packaging of Lightroom on both Microsoft Windows and Apple Mac systems. Any difference in the two procedures is marked at the specific location.

Download

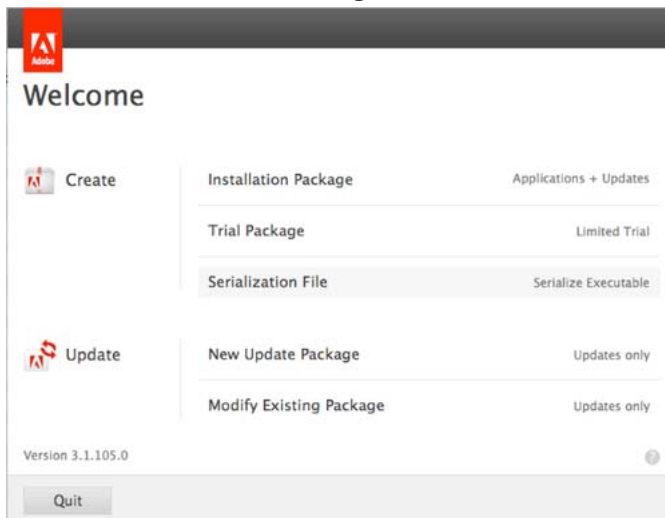
Download the following installers from the Adobe Licensing Web Site:

Adobe Lightroom 4.1 CCM Build

AAMEE 3.1

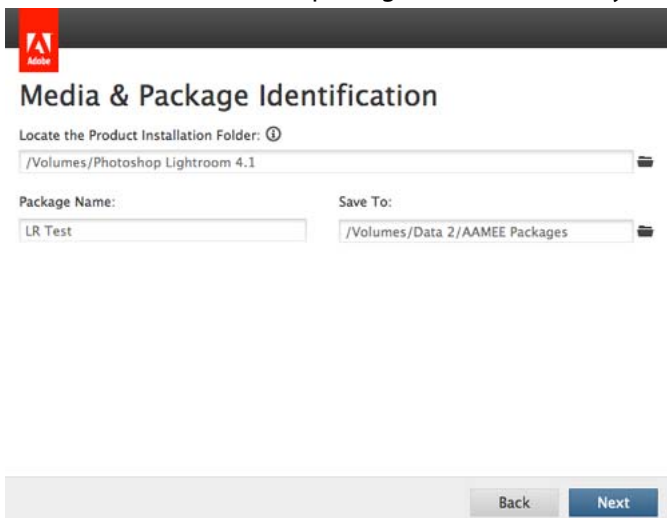
Package Adobe Lightroom

1. Launch **AAMEE**.
2. Select **Installation Package**.

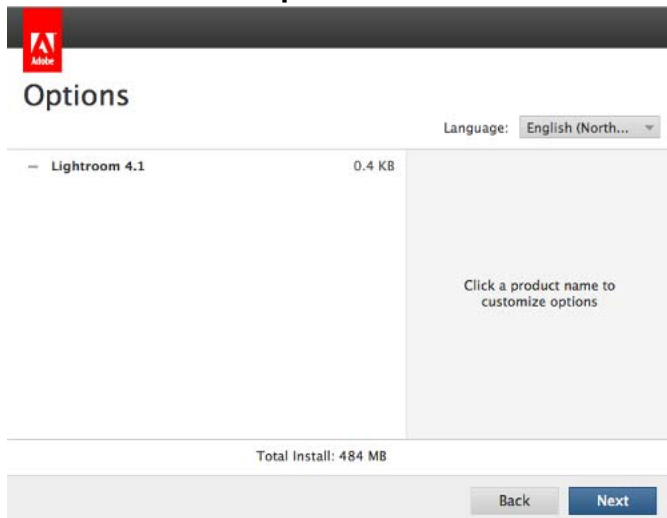


3. When asked for media, point AAMEE at the Lightroom 4.1 file you downloaded earlier.

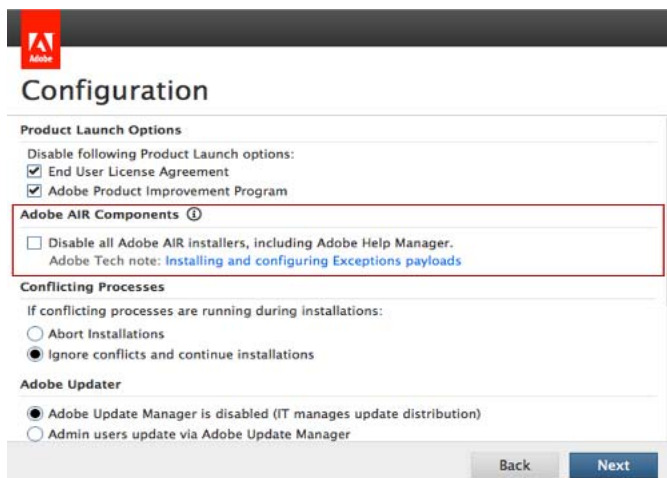
4. Enter the name of the package and the location you wish to store it.



5. Click **Next** on the **Options** screen.

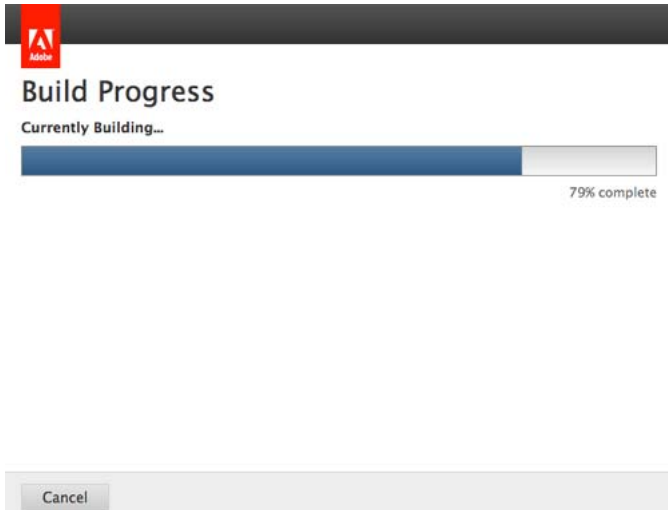


6. Ensure that you un-check the **Disable all Adobe AIR installers, including Adobe Help Manager** option.



Note: The Configuration screen for the Microsoft Windows packager does not include the Adobe AIR Components section (*highlighted above*).

7. When Build is complete the package will appear where you designated.

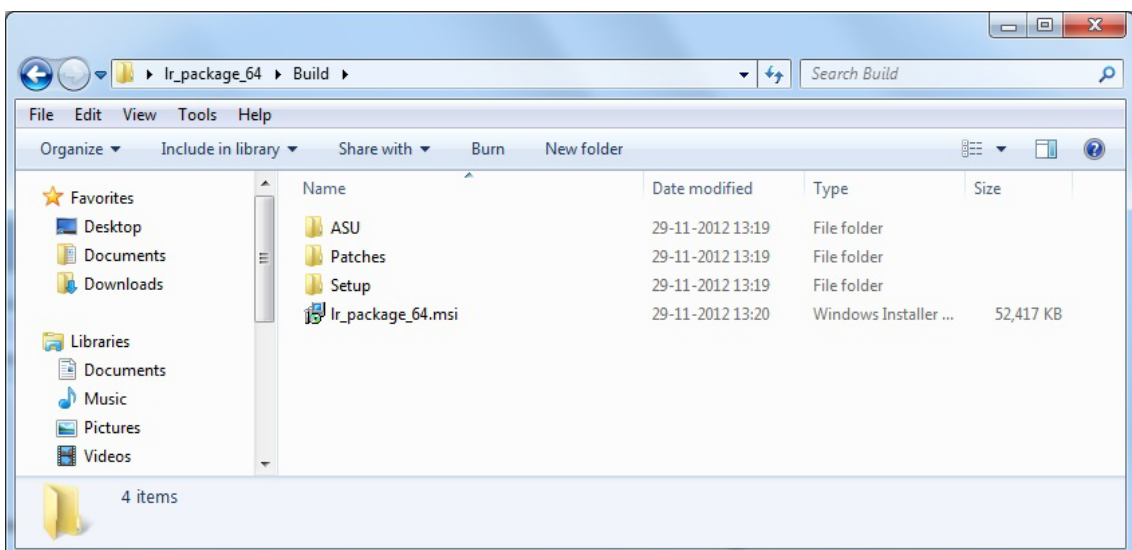


Important: The package outputs for both Mac (**pkg**) and Windows (**msi**) differ as displayed below:

Mac

Name	Date Modified
Build	Today 11:56
LR Test_Install.pkg	4 Sep 2012 11:16
LR Test_Uninstall.pkg	4 Sep 2012 11:16
Exceptions	Today 11:49
LR Test.aamee	Today 11:49

Windows



Deploy

After you create the Lightroom package, deploy <Package Name>.pkg (for Mac) or <Package Name>.msi (for Win) using your chosen deployment tool. For example: Jamf Casper, Alteris or Microsoft's SCCM.

Post Deployment

Launch

If you deploy Lightroom using AAMEE, the Updates dialog is not suppressed. This implies that when you launch Lightroom, a software update message is displayed.

If you click the Download button on the lower-right corner of the dialog, you are redirected to Adobe.com from where you can download the latest update.

Registration

The Lightroom serial number is not suppressed. This means that a user can view the serial number from **License** tab on **Lightroom registration** screen. This dialog is available from **Help->Registration**.

Uninstall

Windows

If the AAMEE administrator uninstalls the Lightroom package, the application is still available for use on the machine. However, the application will launch in trial mode. This is because only the application driver is uninstalled from machine.

Mac

If the AAMEE administrator uninstalls the Lightroom package, the application is removed from the machine. However, in step 6 of the Package Adobe Lightroom procedure (*above*), if you check the **Disable all Adobe AIR installers, including Adobe Help Manager** option, the behavior will be exactly as in the case of Windows (*above*).